

Welcome to the Summer Term, we hope you all had a lovely Easter break. We would like to welcome all our new families to Playstation.



This terms' themes



15th – 19th April = Physical Play week

We know some of you already ride your bikes or scooters to Playstation. As we start this term we will be looking at developing our physical play resources and our bikes and trikes area. Watch out for more information.

22nd – 26th April = Looking after the World

As we celebrate Earth day we will be thinking about how we can look after the world. We will be planting some wild flower seeds to encourage the wildlife in our garden.

29th April – 10th May = Farm

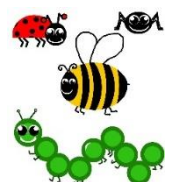
At this time of year lots is happening in the fields around us, we will be reflecting this in our resources and play. Don't forget to let us know if you visit a farm, we always love to hear your news.

13th – 17th May = Cooking/baking

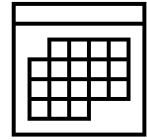
We hope to make some wonderful creations this week as the children help us prepare snack. If your child has an allergy please speak with your child's keyperson, recipes will be for example egg muffins, pizza faces....

20th – 24th May = Insects/bugs and minibeasts

We always enjoy bug hunting in the garden, our focus for resources this week will all revolve around insects.



Dates for your diary



Summer Term Dates

Mon 15th April - Fr 24th May

Half term 27th - 31st May

Mon 3rd Jun - Fri 19th Jul

Please note that we will be closed on Monday 6th May, as it's a Bank Holiday.

Parents social

Please join us on Wednesday 8th May for a parent social from 7pm – 9pm at The Royal British Legion. More details to follow.

Reminders

- **If your child has suffered from any illness or sickness and diarrhoea it is required that your child does not return to Playstation until 48 hours after their last symptoms. We do not have the facilities or staffing to nurse children who are unwell. If your child needs Calpol please keep them at home.**
- We are a **nut free** setting. Please can you ensure if your child has chocolate spread in their lunch box it is a nut free variety.
- Can you ensure your child has a suitable waterproof coat and footwear for playing outside, along with a bag of change of clothing.
- If your child is in nappies please could we remind you to provide nappies and wipes as appropriate.
- We have a lot of lost property waiting to be claimed! Please can you name all clothing and belongings, thank you.
- We understand that children like to bring in comfort toys or items, please could you encourage your child to bring in one small items of low value that can fit in their bag, thank you.

Fees from April 2024

We have managed to not increase our fees for over a year, but with the ever increase in outgoings we are now in need of reviewing our income. We are therefore introducing a consumables cost, this will cover the cost of items such as breakfast, snack, tissues, cleaning items, etc. The cost will be £5.00 per half term for those attending up to 15 hours and £10.00 for per half term for those attending up to 30 hours a week. The cost will be invoiced to you at the start of each half term. We would like to thank you for your continued support and understanding.

We have been asked by Hadleigh Community Primary School, in line with their own announcements, to remind our parents to park

'in a safe and legal place and to show courtesy to others.'

There have been some incidents around the school at drop off and pick up times of people parking inappropriately. Thank you for your understanding and cooperation in this continuing matter.

Uniform

Whilst we do not require children to wear a uniform, we do offer the opportunity for parents to purchase t-shirts and fleeces to avoid getting the children's own clothing messy. If you would like to purchase, please speak with a member of staff. We also have some second hand uniform available for a small donation to playstation.

2 year old T-shirts - £7.00 3-4 year old polo shirts - £7.50

Micro fleeces £14.50 Heavy fleece - £16.50

Useful contacts



South Suffolk Family Hub Blossom House, Unit 7/8 Hadleigh Enterprise Park, Crockatt Road, Hadleigh, IP7 6RJ. 01473 265566

Health Business Hub The Health Business Hub can signpost you in the right direction for Health visitor, family support etc 0345 6078866 or childrenshealth@suffolk.gov.uk

Homestart For family support 01473 621104

PSNDAS for pre and postnatal depression advice and support 0843 2898401

SENDIASS Special Educational Needs and Disability Information and Support Services 01473 265310

Ways to keep in touch



Facebook Page Check out our face book page, for weekly updates links to other parents' pages and more! Playstationpreschool



Tapestry Please check your account regularly for latest updates in your child's journal. The weekly news and latest notices can be found on the memo page



Website Our website has the latest news and information.
www.playstationhadleigh.co.uk



Email our email address is playstationhadleigh@gmail.com



Telephone Our phone number is 01473 824271